

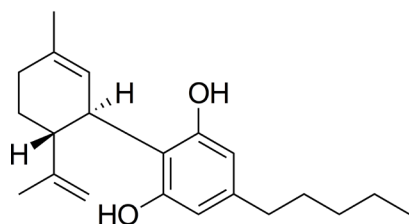


Realhemp™ CBD is a high purity powdered cannabidiol compound.

Cannabidiol (CBD) is one of at least 85 active cannabinoids identified in the cannabis plant. CBD is considered to have a wide scope of potential medical applications. Realhemp™ CBD is a high purity powdered form containing at least 97% CBD and no THC (tetrahydrocannabinol).

Cannabidiol (CBD) Structure

About CBD



Cannabidiol (CBD) is one of at least 85 active cannabinoids found in the industrial hemp plant (*cannabis sativa*). Hundreds of scientific studies have demonstrated CBD's potential in addressing a wide range of serious conditions, including rheumatoid arthritis, diabetes, chronic pain, schizophrenia, PTSD, epilepsy, Alzheimer's, Parkinson's, HIV dementia and many others. CBD is also non-psychoactive and is not believed to have any addictive properties and has been shown to be extremely well tolerated at high doses with little or no side effects.

Availability

Realhemp™ CBD powder is available in bulk wholesale quantities of 1kg (2.2lb) or more.

Specifications

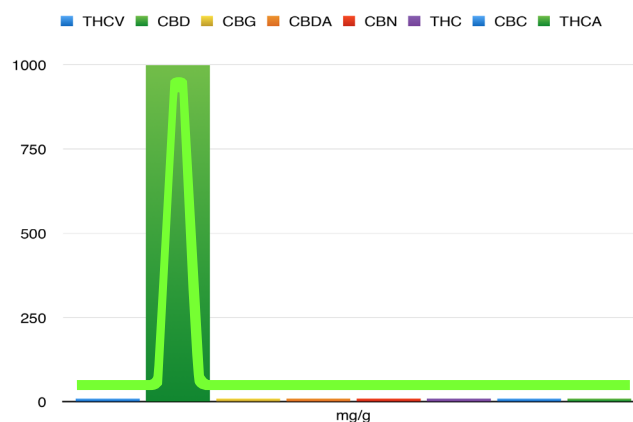
CANNABINOIDS (HPLC)		
	mg/g	%
THCV - (Tetrahydrocannabivarin)	<9.50	<0.95
CBDA - (Cannabidiolic acid)	<9.50	<0.95
CBG - (Cannabigerol)	<9.50	<0.95
CBD - (Cannabidiol)	>970	>97
CBN - (Cannabinol)	<9.50	<0.95
THC - (Tetrahydrocannabinol)	<9.50	<0.95
CBC - (Cannabichromene)	<9.50	<0.95

CANNABINOIDS TOTALS		
	mg/g	%
Max Active THC	<3.0	<0.3
Min Active CBD	>970	>97
Total Active Cannabinoids	>970	>97
Total Cannabinoids	>970	>97

TERPENOIDS (GC-MS)	
	%
Alpha-Pinene	<0.01
Limonene	<0.01
Terpinolene	<0.01
Linalool	<0.01
Beta-Caryophyllene	<0.01
Alpha-Humulene	<0.01
Caryophyllene Oxide	<0.01

RESIDUAL SOLVENTS (GC-MS)	
	ppm
Methane	<6.0
Ethane	<6.0
Propane	<6.0
Isobutane	<6.0
n-Butane	<6.0
Ethanol	<6.0
Acetone	<6.0
Isopropyl Alcohol	<6.0
Isopentane	<6.0
n-Pentane	<6.0
n-Hexanes	<6.0

HEAVY METALS (GC-MS)	
	ppm
Arsenic	<6.0
Cadmium	<6.0
Mercury	<6.0
Lead	<6.0



SYSTEMATIC (IUPAC) NAME

2-[(1R,6R)-6-isopropenyl-3-methylcyclohex-2-en-1-yl]-5-pentylbenzene-1,3-diol

PHARMACOKINETIC DATA

Bioavailability oral: ~13-19%, inhaled: ~11-45% [mean ~31%]
Half-life ~9 h

CHEMICAL DATA

Formula C₂₁H₃₀O₂
Molecular mass 314.4636

PRODUCT IMAGE



Please contact [#Realhemp](#) for more information or to place an order by calling 1-888-781-1235 or reach us via email at info@realhemp.com.